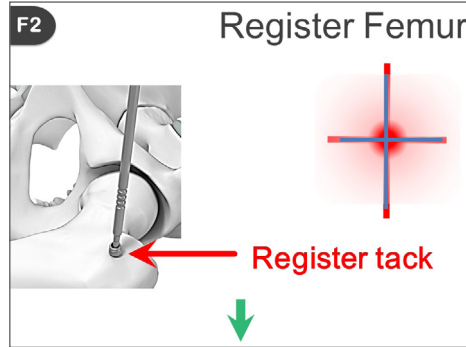


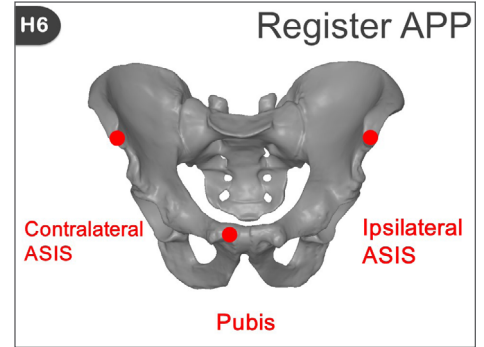
Registrations



- Insert pins into crest, secure pelvic base, and attach sensor and unit

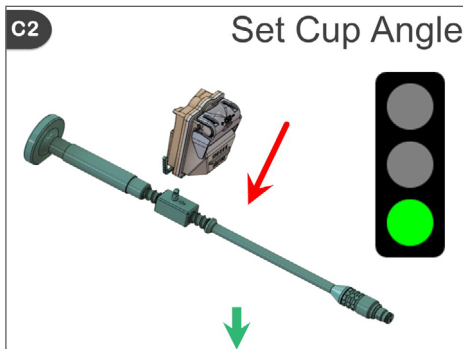


- Insert tack & align laser target
- Register femur tack

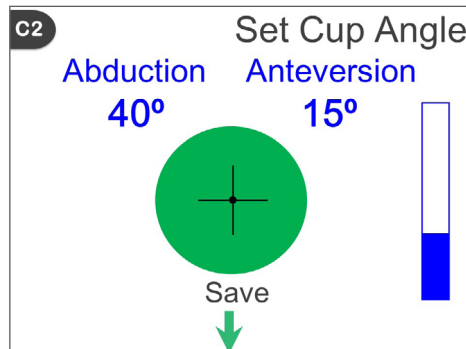


- Use probe to register each ASIS and pubic symphysis

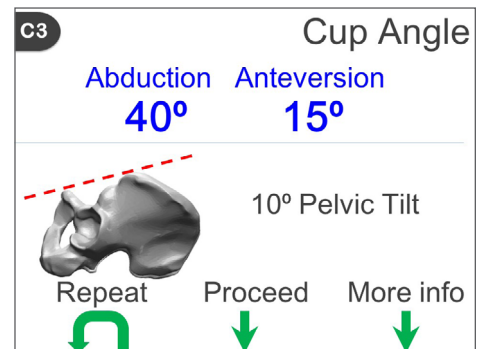
Cup placement



- Attach sensor to impactor

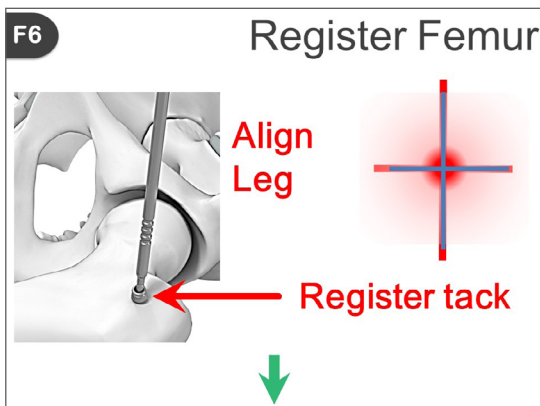


- Align crosshairs in center of target to set cup angle at target angles

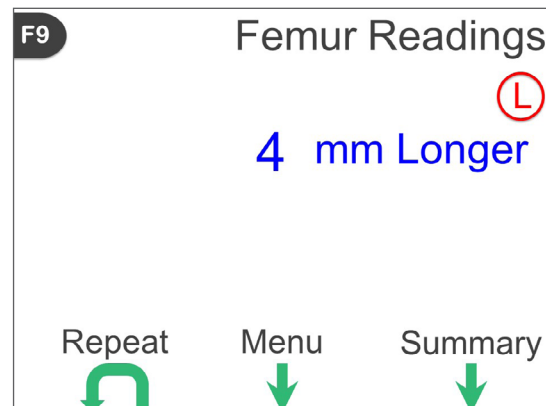


- Assess cup position

Leg length assessment



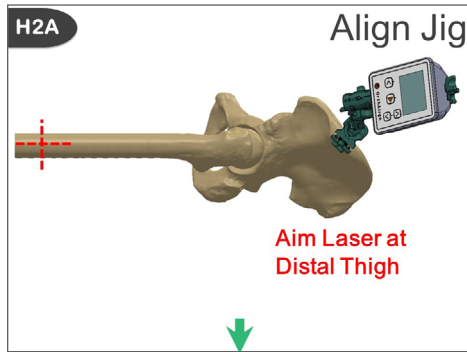
- Align leg with laser and register femur tack



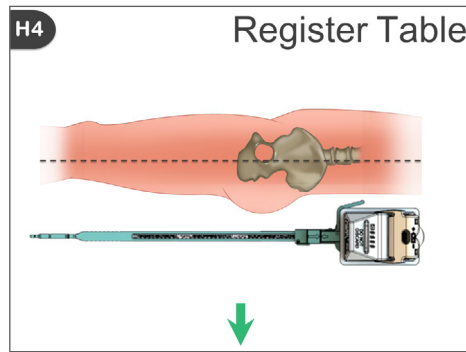
- Assess changes in leg length

+ Refer to 001115 for full technique manual (Supine)

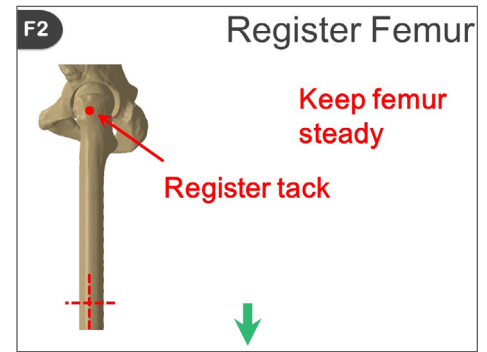
Registrations



- Insert pins into crest, secure pelvic base, and attach sensor and unit

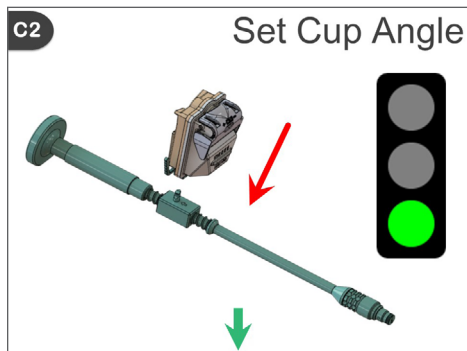


- Verify sagittal plane of pelvis is level and align probe with coronal plane

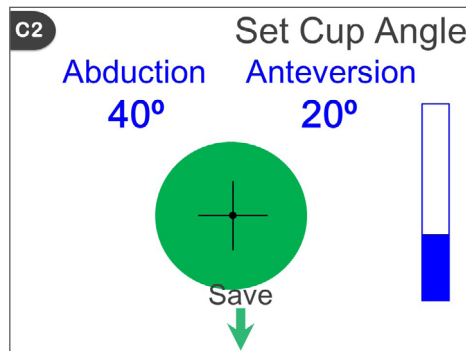


- Insert tack & align laser target
- Register femur tack

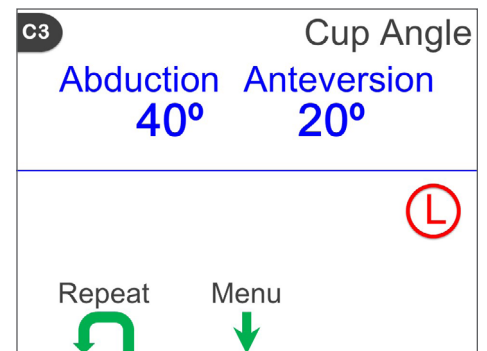
Cup placement



- Attach sensor to impactor

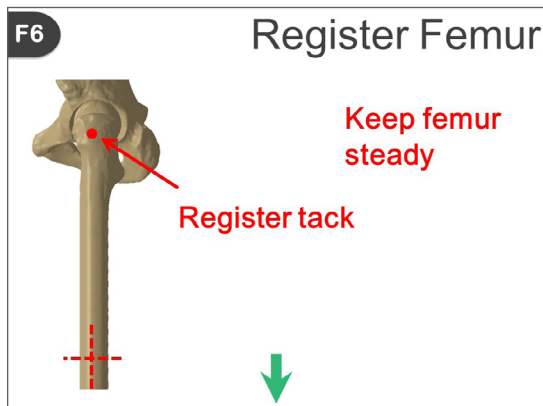


- Align crosshairs in center of target to set cup angle at target angles

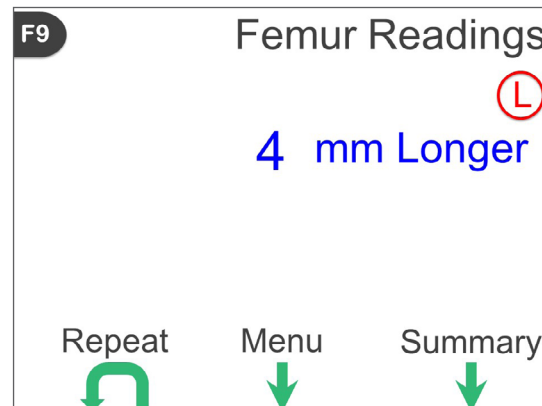


- Assess cup position

Leg length assessment



- Align leg with laser and register femur tack



- Assess changes in leg length

+ Refer to 001201 for full technique manual (Lateral)