

## Remove the unit



- Open package



- Drop into sterile field



- Peel blister pack



- Remove contents

## Attach the sensor



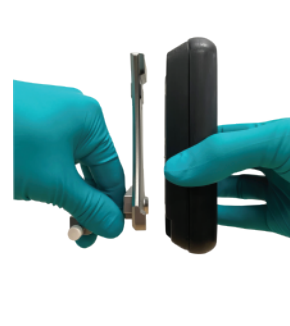
- Insert battery



- Power on unit



- Pair sensor to unit

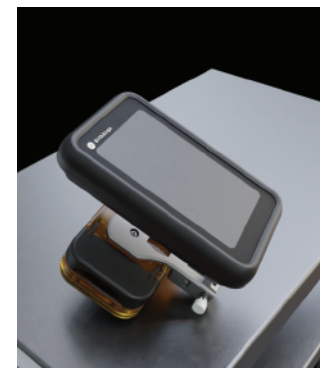
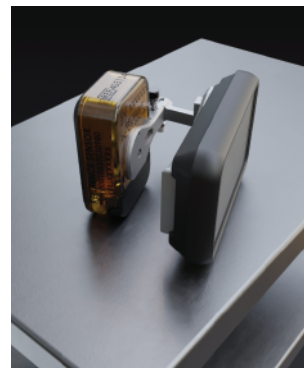


- Attach unit to bracket



- Attach sensor to bracket

## Calibrate the unit



- Keep navigation unit maintained in a steady position to ensure calibration will be accepted.
- Level must be green, but the ball does not need to be in the exact center of the circle.

### Types of Beeps:

- Short Beep: Acknowledgement that a registration was accepted.
- Long Beep: Input was not accepted or there was an error.
- Double Beep: Navigation unit completed registration or calibration step successfully.

## After navigation:

- Battery must be removed from the Reference Sensor.
- Battery must be discarded.

## Power off:

- **Hard Power Off Option 1:** Hold down power button for 3 seconds until the blue light illuminates. Press “Power Off” when prompted.
- **Hard Power Off Option 2:** Hold down power button for 8 seconds. Unit will power off without any additional input.

## Reference sensor:

- **The Reference Sensor must NOT be discarded.** Sensor should be returned to its designated location in the instrument tray.

